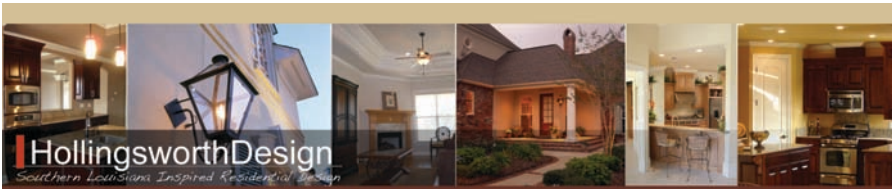




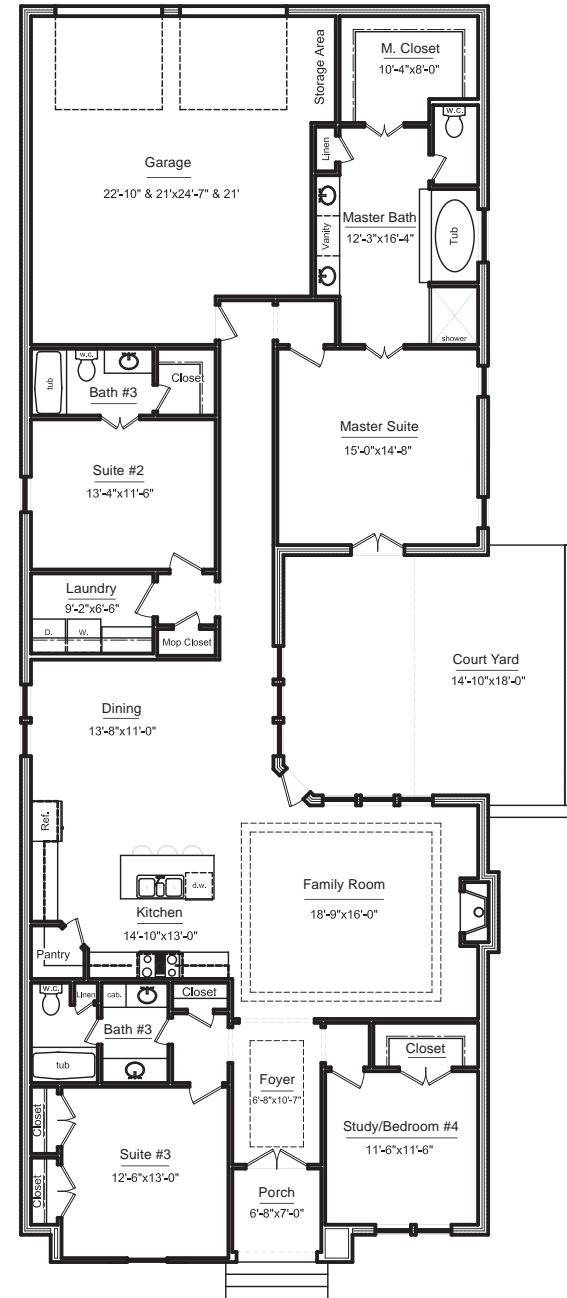
The Bienville

HOUSE PLAN DETAILS 35' model:

- 3 or 4 bedrooms
- 3 bathrooms
- Side courtyard
- Front porch = 46 sq.ft.
- Brick and stucco construction
- French inspired design
- Garage area = 541 sq.ft.
- Total area under beam = 3,173 sq.ft.
- Project Dimensions = 35'-0" x 94'-1"
- Total Living area = 2,424 sq.ft.



HollingsworthDesign
Southern Louisiana Inspired Residential Design
www.hollingsworthdesign.net • 877.496.8188



Total (heated and cooled) Living area = 2,410 sq.ft.
* All deminsions are approximate